

Month 7: Basic New York Beauty (provided June 2017; share July 2017)

The Basic New York Beauty is a combination of foundation paper piecing and curve piecing. Using foundation paper piecing allows the points of the simple triangles arrayed along an arc to maintain their points. As shown, this block uses 5 fabrics: Fabric 2, Fabric 3, Fabric 4, Fabric 5 and Fabric 6.



Fabric needed: Cut the listed pieces for each fabric. Be sure each piece is cut accurately.

	3" blocks on-point	9" block	9" blocks on-point
Fabric 2	2 of small background template	1 of background template	2 of background template
Fabric 3	12 of 1-1/4" x 1-3/4"	6 of 2-3/4" x 4"	12 of 2-3/4" x 4"
Fabric 4	10 of 1-1/4" x 1-3/4"	5 of 1-3/4" x 4"	10 of 1-3/4" x 4"
Fabric 5	2 of small inner arc template 2 of small outer arc template	1 of inner arc template 1 of outer arc template	2 of inner arc template 2 of outer arc template
Fabric 6	2 of small quarter circle template	1 of quarter circle template	2 of quarter circle template

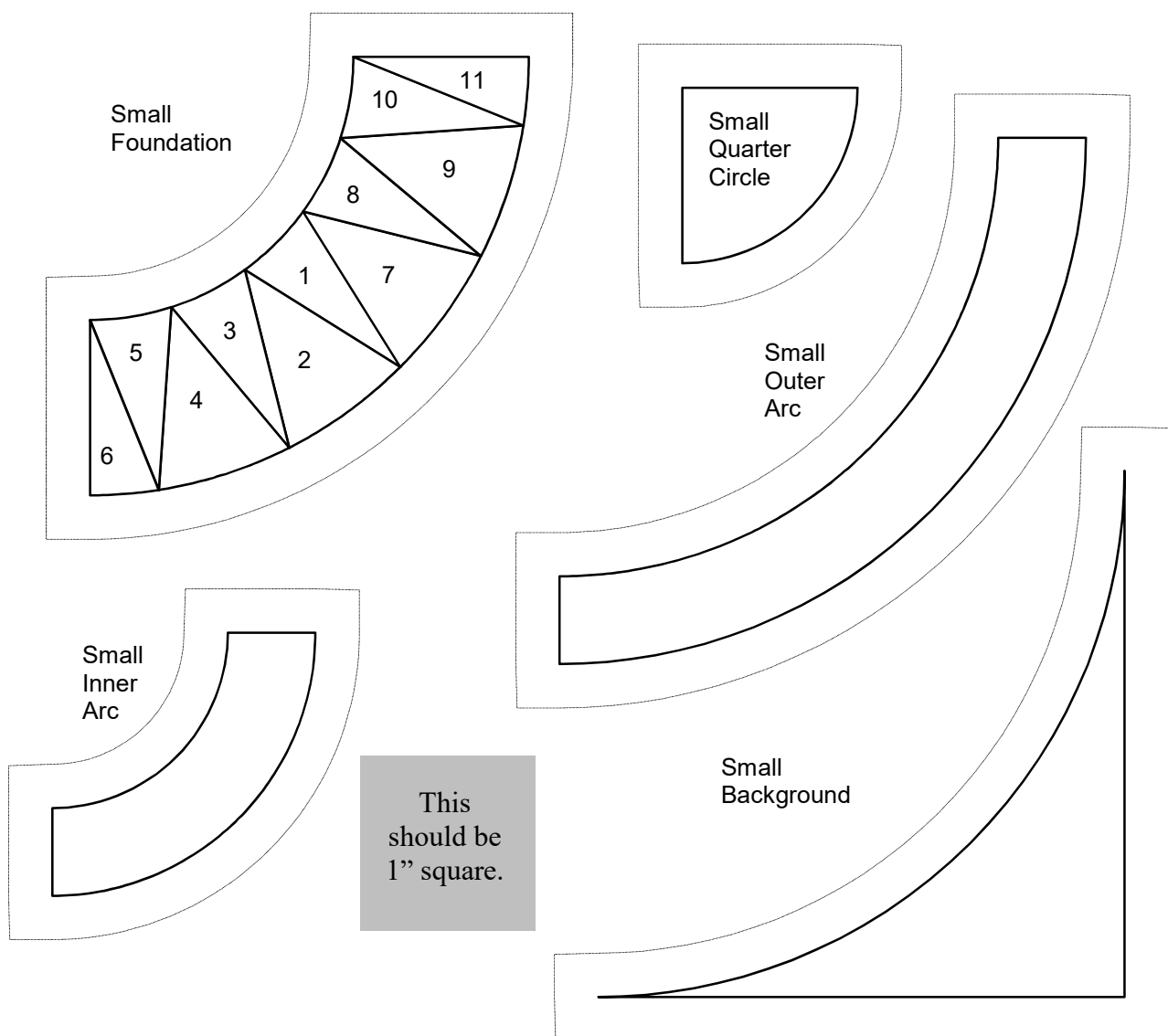
Piecing Instructions for 9" blocks (3")

Note: Watch carefully as you stitch.

1. Stitch a Fabric 5 (small) inner arc to a Fabric 6 (small) quarter circle. Press the seam toward Fabric 5.
2. Stitch a Fabric 2 (small) background piece to a Fabric 5 (small) outer arc. Press the seam toward Fabric 2.
3. Foundation paper piece the spiked arc using Fabric 3 and Fabric 4.
 - a) Start by attaching a Fabric 3 rectangle, right side up, to Section 1, on the back of the foundation. Be sure that there is sufficient fabric extending out from all sides of the section. Use either a pin or a dab of washable fabric glue on the back of the rectangle to secure it in place.
 - b) On the front of the foundation, cover Section 1 with a postcard or something similar with the thin straight edge on the line between Section 1 and 2. Fold the foundation back over the card.
 - c) Using a ruler, trim the fabric to 1/4" from the folded edge of the foundation.

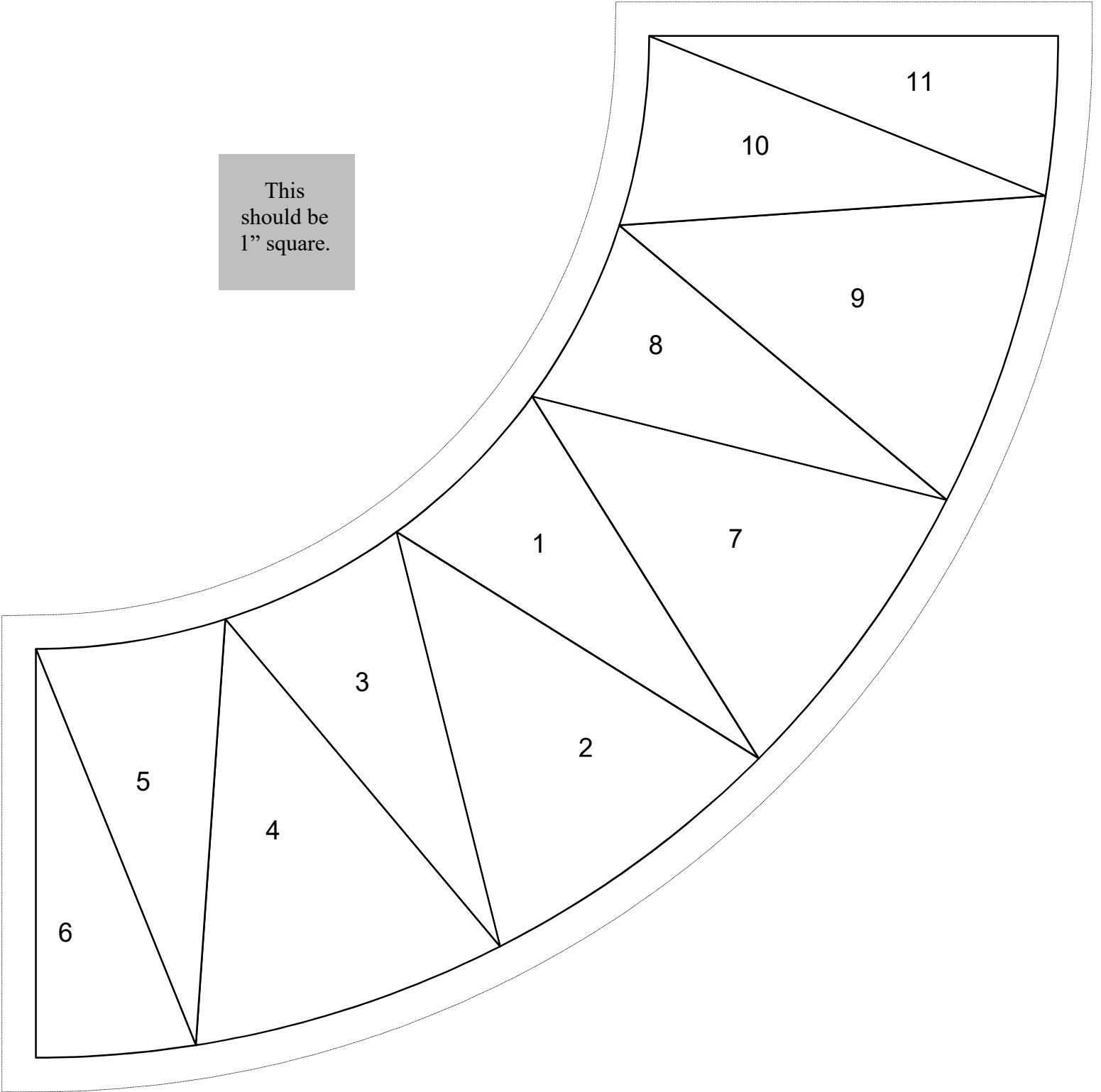
- d) Align an edge of a Fabric 4 rectangle with the trimmed edge of Section 1. The fabrics should be right side together.
 - e) Smooth the foundation out and stitch on the line with a shortened stitch (i.e. 1.5-1.8). A shortened stitch will perforate the paper more and make it easier to remove. Start the stitching before and extend it beyond the Section 1 & 2 line.
 - f) Press the Fabric 4 rectangle toward Section 2.
 - g) Repeat the steps b) through f) alternating between adding a Fabric 3 and a Fabric 4 rectangle. Fold, trim to 1/4", align rectangle, stitch, press, repeat.
4. Trim the outside edge of the foundation to the 1/4" seam line.
 5. Stitch the foundation between the units made in Steps 1 and 2.
 6. Remove the foundation. Press the seams toward the outer arc. The block should measure 9-1/2" x 9-1/2" (3-1/2" x 3-1/2").

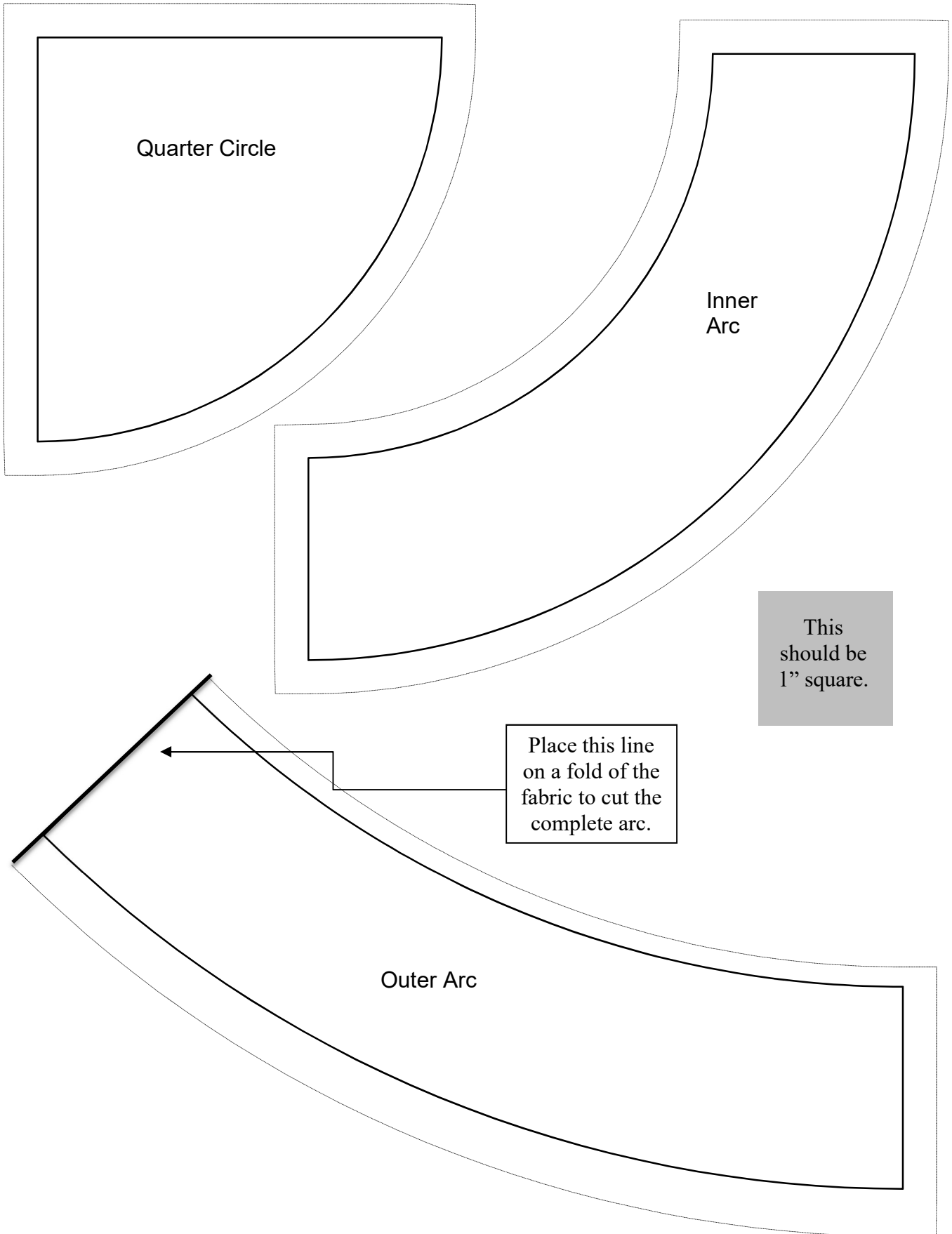
Basic New York Beauty Templates



Foundation

This should be 1" square.





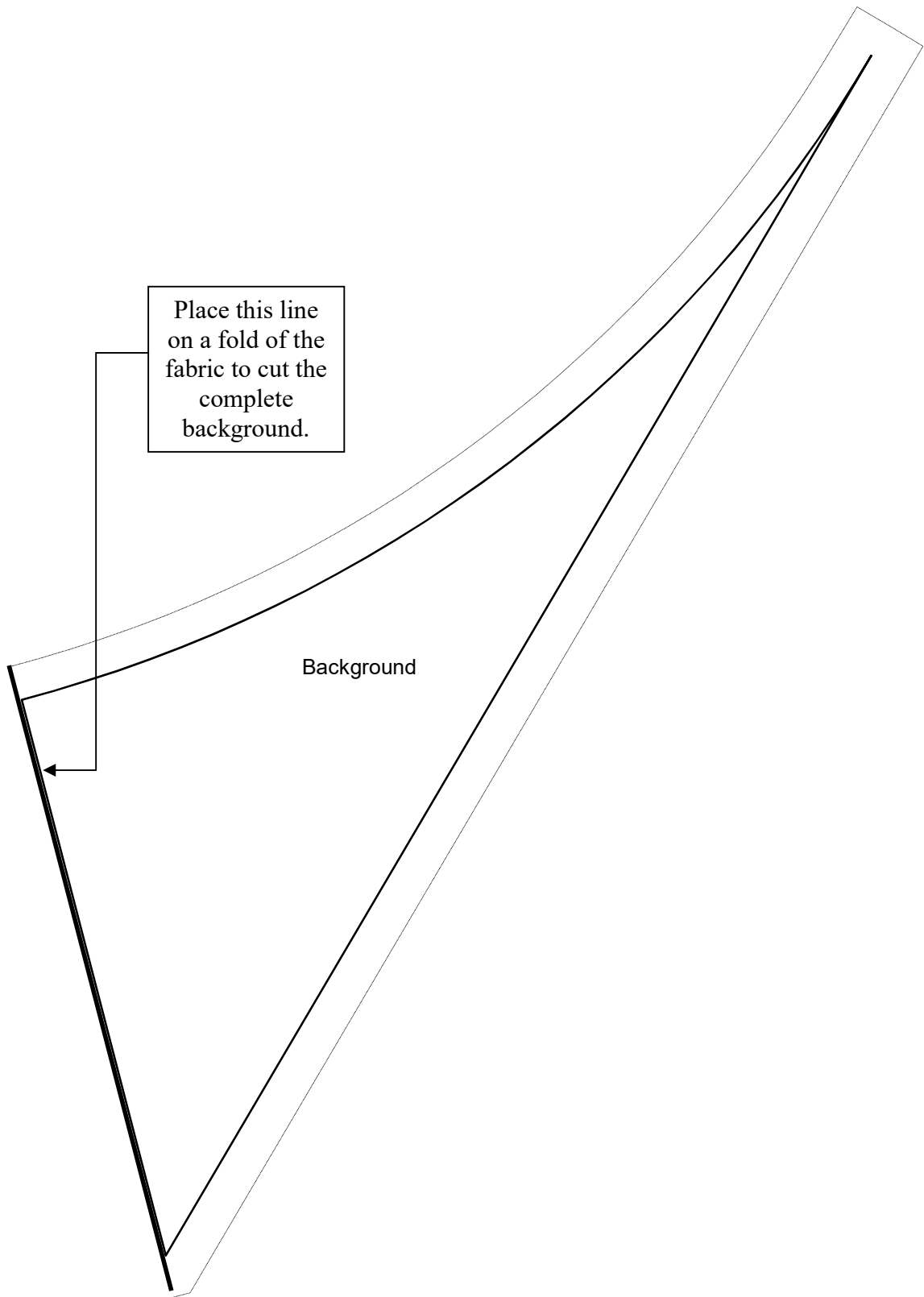
Quarter Circle

Inner Arc

This should be 1" square.

Place this line on a fold of the fabric to cut the complete arc.

Outer Arc



Place this line
on a fold of the
fabric to cut the
complete
background.

Background